

義大醫院 SCI/SSCI 論文發表榮譽榜

2017年6月

- 1、資料更新日期及範圍：文獻資料回溯自 2017 年 5 月 11 日至 2017 年 6 月 10 日止。
 2、收錄文獻取自 Web of Science 資料庫，JCR 為 2015 年版。

檢索日期：2017/6/12

排名等級 Q1 之文章	期刊之學科主題及其 IF 值	文章篇名、作者及出處	作者發表之單位
IF>5	MULTIDISCIPLINARY SCIENCES (7/63) IF=5.228	TI: Metformin disrupts malignant behavior of oral squamous cell carcinoma via a novel signaling involving Late SV40 factor/Aurora-A. AU: Chen CH, Tsai HT, Chuang HC, Shiu LY(徐歷彥)*, Su LJ, Chiu TJ, Luo SD, Fang FM, Huang CC, Chien CY	*義大醫院醫學研究部
IF>5	CELL BIOLOGY (43/187) ONCOLOGY (36/213) IF=5.008	SO: SCIENTIFIC REPORTS Volume: 7 Article Number: 1358 Published: MAY 2 2017 TI: Risk of osteoporosis and pathologic fractures in cancer patients who underwent hematopoietic stem cell transplantation: a nationwide retrospective cohort study. AU: Lin JN(林俊農)*, Chen HJ, Yang CH, Lai CH(賴重旭)*, Lin HH(林錫勳)*, Chang CS, Liang JA	*義大醫院重症醫學部 *義大醫院感染管制部
IF<5	ENVIRONMENTAL SCIENCES (17/225) IF=4.839	SO: ONCOTARGET Volume: 8 Issue: 21 Pages: 34811-34819 Published: MAY 23 2017 TI: Mono-2-ethylhexyl phthalate associated with insulin resistance and lower testosterone levels in a young population. AU: Chen SY(陳思穎)*, Hwang JS, Sung FC, Lin CY, Hsieh CJ, Chen PC, Su TC	*義大醫院外科加護科
IF<5	FOOD SCIENCE & TECHNOLOGY (13/125) TOXICOLOGY (15/90) IF=3.584	TI: Effects of di(2-ethylhexyl)phthalate exposure on 1,2-dimethylhydrazine-induced colon tumor promotion in rats. AU: Chen HP(陳興保)*, Pan MH, Chou YY, Sung C, Lee KH(李國新)*, Leung CM, Hsu PC SO: FOOD AND CHEMICAL TOXICOLOGY Volume: 103 Pages: 157-167 Published: MAY 2017	*義大醫院神經內科

MULTIDISCIPLINARY SCIENCES
IF<5 (11/63)

IF=3.057

TI: Low cholesterol level associated with severity and outcome of spontaneous intracerebral hemorrhage: Results from Taiwan Stroke Registry.

AU: Chen YW, Li CH, Yang CD, Liu CH, Chen CH, Sheu JJ, Lin SK, Chen AC, Chen PK, Chen PL, Yeh CH, Chen JR, Hsiao YJ, Lin CH, Hsu SP(許世斌)*, Chen TS, Sung SF, Yu SC, Muo CH, Wen CP, Sung FC, Jeng JS, Hsu CY

*義大醫院神經內科

SO: PLOS ONE Volume: 12 Issue: 4 Article Number: e0171379 Published: APR 19 2017

TI: Surgical treatment for urinary incontinence after prostatectomy: A meta-analysis and systematic review.

AU: Chen YC(陳毓騏)*, Lin PH, Jou YY, Lin VCH(林嘉祥)*

*義大醫院泌尿科

SO: PLOS ONE Volume: 12 Issue: 5 Article Number: e0130867 Published: MAY 3 2017

MULTIDISCIPLINARY SCIENCES
IF<5 (11/63)

IF=3.057

TI: Cytokeratin-18 and uric acid predicts disease severity in Taiwanese nonalcoholic steatohepatitis patients.

AU: Huang JF, Yeh ML, Huang CF, Huang CI, Tsai PC, Tai CM(戴啟明)*, Yang HL, Dai CY, Hsieh MH, Chen SC, Yu ML, Chuang WL

*義大醫院內科部

SO: PLOS ONE Volume: 12 Issue: 5 Article Number: e0174394 Published: MAY 4 2017

MULTIDISCIPLINARY SCIENCES
IF<5 (11/63)

IF=3.057

INTEGRATIVE & COMPLEMENTARY MEDICINE
(3/24)

MEDICINE, GENERAL & INTERNAL
IF<5 (23/155)

IF=2.959

TI: Saikosaponin a Induces Apoptosis through Mitochondria-Dependent Pathway in Hepatic Stellate Cells.

AU: Chen CH, Chen MF(陳明豐)*, Huang SJ(黃瑟德)*, Huang CY(黃俊諺)*, Wang HK(王浩洸)*, Hsieh WC, Huang CH, Liu LF, Shiu LY(徐歷彥)*

*義大醫院胃腸肝膽科

*義大醫院婦產部

*義大醫院神經外科

*義大醫院醫學研究部

SO: AMERICAN JOURNAL OF CHINESE MEDICINE Volume: 45 Issue: 2 Pages: 351-368 Published: 2017

TI: Fisetin-induced apoptosis of human oral cancer SCC-4 cells through reactive oxygen species production, endoplasmic reticulum stress, caspase-, and mitochondria-dependent signaling pathways.

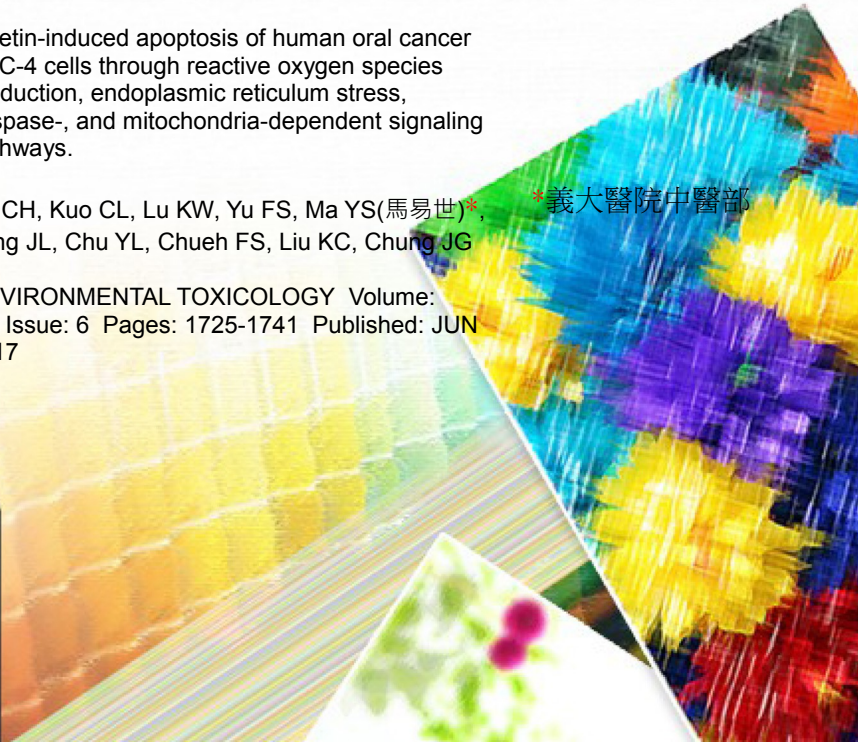
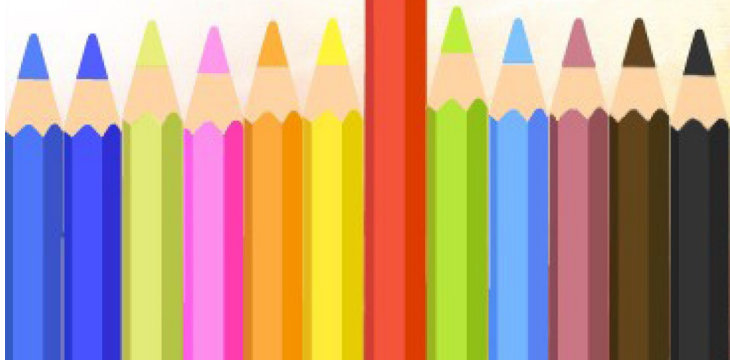
AU: Su CH, Kuo CL, Lu KW, Yu FS, Ma YS(馬易世)*, Yang JL, Chu YL, Chueh FS, Liu KC, Chung JG

*義大醫院中醫部

SO: ENVIRONMENTAL TOXICOLOGY Volume: 32 Issue: 6 Pages: 1725-1741 Published: JUN 2017

WATER RESOURCES
IF<5 (7/85)

IF=2.868



IF<5

**ORTHOPEDECS
(17/74)**

IF=2.425

TI: The protective role of nitric oxide-dependent innate immunosuppression in the early stage of cartilage damage in rats.

AU: Hsu CC, Lin CL, Jou IM(周一鳴)*, Wang PH, Lee JS

*義大醫院骨科部

SO: AMERICAN JOURNAL OF CHINESE MEDICINE Volume: 45 Issue: 2 Pages: 351-368 Published: 2017

TI: Increased Risk of Tics in Children Infected with Enterovirus: A Nationwide Population-Based Study.

AU: Lin JN(林俊農)*, Lin CL, Yen HR, Yang CH, Lai CH(賴重旭)*, Lin HH(林錫勳)*, Kao CH

*義大醫院感染管制部

SO: JOURNAL OF DEVELOPMENTAL AND BEHAVIORAL PEDIATRICS Volume: 38 Issue: 4 Pages: 276-282 Published: MAY 2017

TI: Mechanism of resveratrol-induced relaxation in the human gallbladder.

AU: Tsai CC(蔡璟忠)*, Lee MC, Tey SL(鄭詩樂)*, Liu CW, Huang SC

*義大醫院兒童醫學部

SO: BMC COMPLEMENTARY AND ALTERNATIVE MEDICINE Volume: 17 Article Number: 254 Published: MAY 8 2017

IF<5

**PEDIATRICS
(29/120)**

IF=2.323

IF<5

**INTEGRATIVE &
COMPLEMENTARY
MEDICINE
(5/24)**

IF=1.987



SCI/SSCI 論文發表榮譽榜公告說明

- 1、目的：為鼓勵院內同仁研究發展，並瞭解各單位發表在 SCI/SSCI 之期刊論文品質，故定期檢索製作並公告論文發表榮譽榜。
- 2、資料來源：以義大醫院(E-DA Hospital)為名，發表於最新 Journal Citation Reports (JCR)期刊，以及被 Web of Science (WoS) 資料庫收錄之前 0%-25%(即 Q1)所屬之文章。
- 3、檢索範圍：以 Web of Science 資料庫接續上個月榮譽榜公佈之資料庫更新日期，進行新的一個月收錄文獻之檢索。
- 4、收錄文章之類型：以 Web of Science 資料庫分類的文獻類型 "article" 與 "review" 為主，不包括 meeting abstract、letter、comment、editorial material、proceeding paper... 等其他類型之文獻。但 Nature 期刊之 "letter" 文獻類型等同於 "article"，包括在公告範圍內。
- 5、排序方式：文章依分科排名等級(註)前 0%-25%(即 Q1)及期刊之 IF 值排序，欄位包含排名等級、期刊之學科主題及其 IF 值、文章篇名與作者名和出處、作者發表之單位。
- 6、公佈時間及地點：將於每個月月初公佈上一個月製作的榮譽榜結果，發佈在圖書館網站及公佈欄。
- 7、聯絡方式：如果您有任何問題或建議，歡迎您與圖書館 李健彰(分機 1612)聯絡。

註：分科排名等級依序為 Q1=0%-25%、Q2 =25%-50%、Q3 =50%- 75%、Q4 =75%-100%。

