

scite_

Your starting point to find reproducible science, publications, answers, experts and validate your research idea, a paper or your own performance

用最高效率進行文獻探討和主題追蹤





Generative A.I.

- ChatGPT
- Copilot
- Midjourney
- Sora

Task-specific A.I.

- Turnitin
- Writefull
- Scite



找

發掘相關研究

是否能更精準的找到相關文獻?

scite_

讀

精讀相關文獻

有沒有更省時省力的篩選和整理文獻的方法?

scholarcy

寫

撰寫研究論文

能不能讓寫論文和改論文更輕鬆?

writefull

發

發表研究論文

適合在哪裡發表?

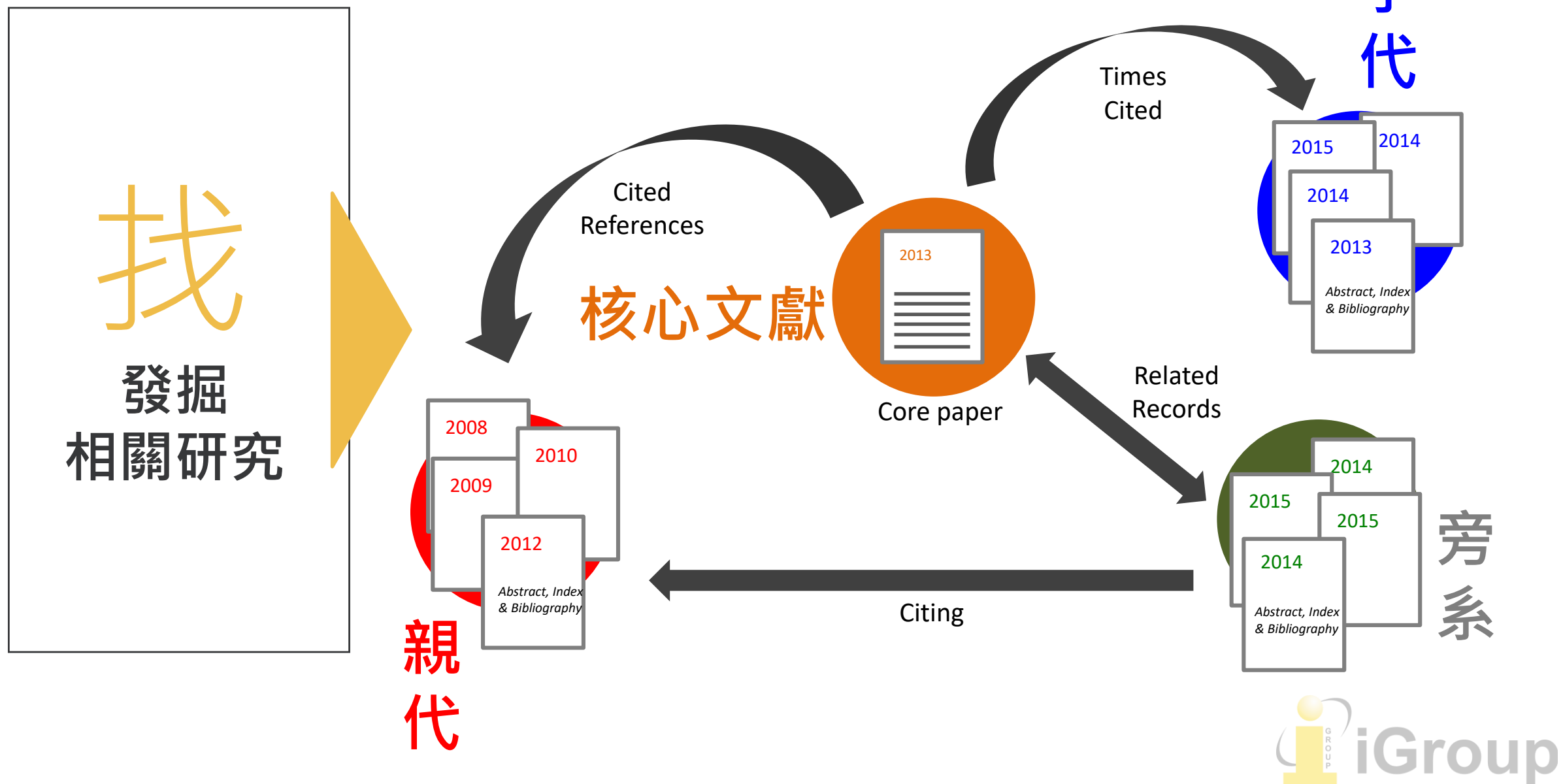
JCR by iesResearch
如何讓更多人知道?

ics
Research

造就優秀論文的關鍵

1. 扎實的文獻基礎：全面掌握前人的進程，理解相關研究如何被學術圈接納與討論
2. 嚴謹的方法與可重複性：產出真正有價值的知識
3. 創新性與前瞻性：找到跨領域、跨時代的未解問題

這些線索，都埋藏在「引用」的脈絡當中



Classify citation statements using Deep Learning.

scite_



supporting ✓

mentioning ⌚

disputing ?



Smart Citation

Scite的技術原理

透過深度學習演算法
分析引用段落的語意

分類為「支持」「提及」
與「駁斥」

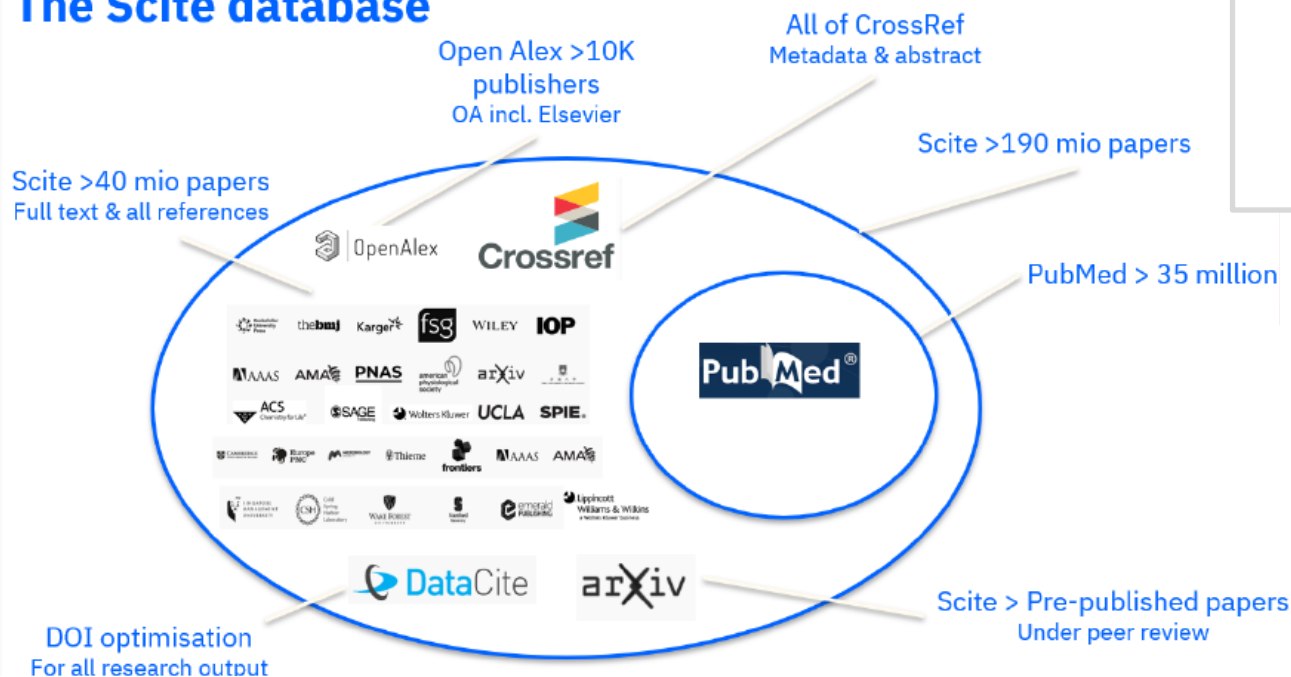
智慧引文索引

引用次數 v.s Scite 智慧引文

資訊深度	只說明「被引用幾次」，無法了解研究是否被驗證，或是否存在爭議	從「量」提升到「質」，可看出一篇研究是如何被理解及討論
資料來源	各個學術資料庫或引文索引庫自動統計而來	以深度學習演算法分析學術全文，整理成智慧引文數據
閱讀效率	需通篇閱讀以了解引用內容	能直接看到引文段落，節省大量閱讀時間
文獻篩選	不易鎖定優質或相關性強的引用	可按照引用類型來搜尋、過濾，專注於真正支持或質疑某論點的文獻

Scite 的資料來源

The Scite database



取得以下出版社授權, 進行全文分析

AAAS

WILEY

IOP
Institute of Physics

ACS Publications
Most Trusted. Most Cited. Most Read.

ROYAL SOCIETY
OF CHEMISTRY

Karger

BMJ

Rockefeller
University
Press

Wolters Kluwer

fsg

IUGr

frontiers

Europe PMC

AMA

資料庫種類：

- 大學、學會出版社
- 集成資料庫：PubMed, arXiv, OpenAlex
- CrossRef

內容種類：

- 全文 (可提供引文分析)
- 僅摘要及Metadata

scite_

收錄類型與數量

(2025/04摘自官網)

整體數據規模

- 引用敘述(Citation Statements) : 超過12億條
- 文章、書籍章節、預印本和數據集 : 1億8,730萬篇
- 總引用數 : 20億條
- 已索引全文數 : 3,450萬篇

涵蓋作者與單位數目

- 作者 : 3億1,300萬
- 機構 : 10萬7千個
- 出版商 : 2萬2,700個
- 期刊 : 10萬3千本

學科	總引用數
生物學	8億4,220萬
醫學	7億5,440萬
化學	6億3,500萬
計算機科學	6億10萬
物理學	5億5,740萬
數學	3億6,360萬
材料科學	3億5,770萬
工程學	3億4,700萬
心理學	2億9,060萬
經濟學	1億9,710萬

Scite 的價值 已受各大出版社肯定

如 Wiley 等出版社
已將 Scite 數據加入文章頁面

Wiley Online Library

Working off-campus? Learn about our [remote access options](#)

Search Login / Register

IFAR: *International Forum of Allergy & Rhinology*

ORIGINAL ARTICLE | [Free Access](#)

Association of chemosensory dysfunction and COVID-19 in patients presenting with influenza-like symptoms

Carol H. Yan MD, Farhoud Faraji MD, PhD, Divya P. Prajapati BS, Christine E. Boone MD, PhD, Adam S. DeConde MD

First published: 12 April 2020 | <https://doi.org/10.1002/alr.22579> | Citations: 364

Funding sources for the study: National Institutes of Health (Clinical and Translational Science Awards [CTSA], UL1TR001442).
Potential conflict of interest: A.S.D. is a consultant for Stryker endoscopy, Olympus, IntersectENT, Sanofi,

Volume 10, Issue 7
July 2020
Pages 806-813

Citation Statements beta

Supporting 38	Mentioning 611	Contrasting 11
------------------	-------------------	-------------------

Explore this article's citation statements on [scite.ai](#)

powered by **scite_**

Figures References Related Information

Recommended

[Self-reported olfactory loss associates with outpatient clinical course in COVID-19](#)

Carol H. Yan MD, Farhoud Faraji MD, PhD, Divya P. Prajapati BS, Benjamin T. Ostrander MD, Adam S. DeConde MD

[International Forum of Allergy & Rhinology](#)

THE ROYAL SOCIETY PUBLISHING | All Journals

Home Content Information for About us Sign up Propose an issue

PHILOSOPHICAL TRANSACTIONS OF THE ROYAL SOCIETY B

BIOLOGICAL SCIENCES

Open Access
[Check for updates](#)
[View PDF](#)

Tools Share

Cite this article

Food waste within food supply chains: quantification and potential for change to 2050

Julian Parfitt, Mark Barthel and Sarah Macnaughton

Published: 27 September 2010 | <https://doi.org/10.1098/rstb.2010.0126>

Abstract

Food waste in the global food supply chain is reviewed in relation to the prospects for feeding a population of nine billion by 2050. Different definitions of food waste with respect to the complexities of food supply chains (FSCs) are discussed. An international literature review found a dearth of data on food waste and estimates varied widely; those for post-harvest losses of grain in developing countries might be overestimated. As much of the post-harvest loss data for developing countries was collected over 30 years ago, current global losses cannot be quantified. A significant gap exists in the understanding of the food waste implications of the rapid development of 'BRIC' economies. The limited data suggest that losses are much higher at the immediate post-harvest stages in developing countries and higher for perishable foods across industrialized and developing economies alike. For affluent economies, post-consumer

1.6k

scite_

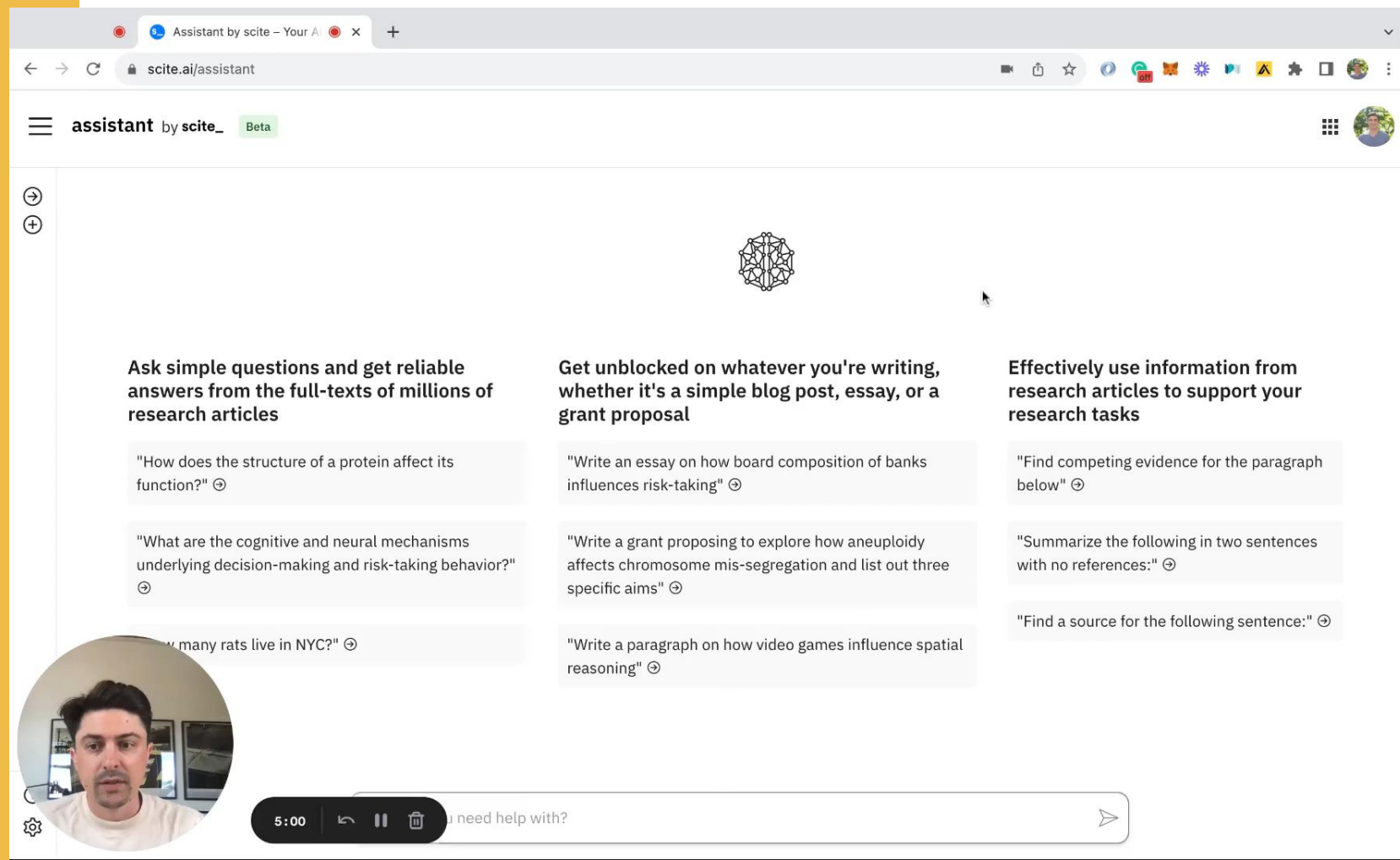
1,672	19	1,191	2
-------	----	-------	---

Keywords
consumer waste
post-harvest loss
food waste

生成式 AI x Peer-reviewed 學術文獻

快速取得

- 理論的正反論述
- 專題重要文獻與其論點
- 陌生主題的探索
- 新功能：表格介面，系統回顧精準迅速



Watch the video online [here](#)

Scite Chrome extension (免費使用)

讓使用者在 PubMed 等資料庫頁面
快速查看 Scite 數據

BMC Part of Springer Nature

Search Explore journals Get published About BMC Login

Reproductive Biology and Endocrinology

Home About Articles Submission Guidelines

Research | Open Access | Published: 05 January 2017

Induction of altered gene expression profiles in cultured bovine granulosa cells at high cell density

Anja Baufeld, Dirk Koczan & Jens Vanselow

Reproductive Biology and Endocrinology **15**, Article number: 3 (2017) | [Cite this article](#)

1865 Accesses | 10 Citations | 1 Altmetric | [Metrics](#)

Abstract

Background

In previous studies it has been shown that bovine granulosa cells (GC) cultured at a high plating density dramatically change their physiological and molecular characteristics, thus resembling an early stage of luteinization. During the present study, these specific effects on the GC transcriptome were comprehensively analysed to clarify the underlying mechanisms.

[Download PDF](#)

Sections **Figures** **References**

[Abstract](#)
[Background](#)
[Methods](#)
[Results](#)
[Discussion](#)
[Conclusions](#)
[Abbreviations](#)
[References](#)
[Acknowledgements](#)
[Author information](#)
[Additional file](#)
[Rights and permissions](#)

scite_

	12
	2
	10
	0

[→ hide](#)

PubMed.gov

stem cells **Search**

Advanced Create alert Create RSS User Guide

Save Email Send to Sorted by: Best match Display options

MY NCBI FILTERS

RESULTS BY YEAR

1911 2022

TEXT AVAILABILITY

☐ Abstract
☐ Free full text
☐ Full text

ARTICLE ATTRIBUTE

☐ Associated data

ARTICLE TYPE

☐ Books and Documents
☐ Clinical Trial
☐ Meta-Analysis
☐ Randomized Controlled Trial
☐ Review
☐ Systematic Review

PUBLICATION DATE

☐ 1 year
☐ 5 years
☐ 10 years
☐ Custom Range

401,983 results

Page 1 of 40,199

☐ **Cell Cycle Regulation of Stem Cells by MicroRNAs.**

1 Mens MMJ, Ghanbari M.
Cite Stem Cell Rev Rep. 2018 Jun;14(3):309-322. doi: 10.1007/s12015-018-9808-y.
PMID: 29541978 **Free PMC article.** Review.
Share However, the precise mechanism underlying miRNA-mediated regulation of cell cycle in **stem cells** is still incompletely understood. In this review, we discuss current knowledge of miRNAs regulatory role in cell cycle progression of **stem cells**. We describ ...
 103 0 72 0

☐ **Introduction to stem cells and regenerative medicine.**

2 Kolios G, Moodley Y.
Cite Respiration. 2013;85(1):3-10. doi: 10.1159/000345615. Epub 2012 Dec 13.
PMID: 23257690 **Free article.** Review.
Share There are several sources of **stem cells** with varying potencies. Pluripotent **cells** are embryonic **stem cells** derived from the inner cell mass of the embryo and induced pluripotent **cells** are formed following reprogramming of somatic **cells** ...
 149 1 99 0

☐ **Adult stem cells: hopes and hypes of regenerative medicine.**

3 Dulak J, Szade K, Szade A, Nowak W, Józkowicz A.
Cite Acta Biochim Pol. 2015;62(3):329-37. doi: 10.18388/abp.2015_1023. Epub 2015 Jul 22.
PMID: 26200199 **Free article.** Review.
Share Pluripotent **stem cells**, i.e. embryonic **stem cells** (ESC) or induced pluripotent **stem cells** (iPSC) differentiate into **cells** of all three embryonic lineages. Multipotent **stem cells**, like hematopoietic **stem cell** ...
 84 0 57 0

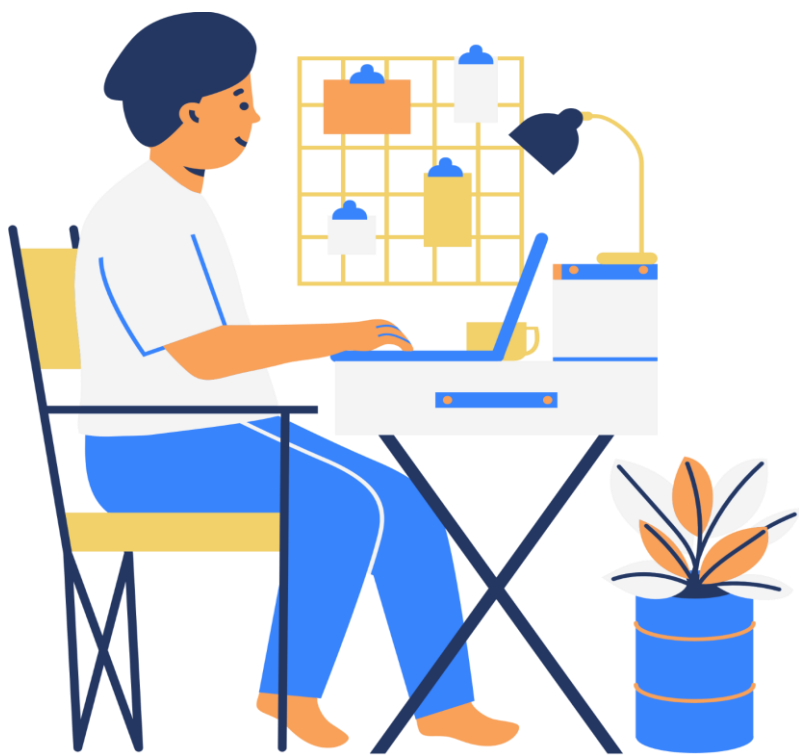
☐ **DNA Damage in Stem Cells.**

4 Vitale I, Manic G, De Maria R, Kroemer G, Galluzzi L.
Cite Mol Cell. 2017 May 4;66(3):306-319. doi: 10.1016/j.molcel.2017.04.006.
PMID: 28475867 **Free article.** Review.
Share Both embryonic and adult **stem cells** are endowed with a superior capacity to prevent the accumulation of genetic lesions, repair them, or avoid their propagation to daughter **cells**, which would be particularly detrimental to the whole organism. ... Here, we disc ...
 169 6 153 0

Scite 個人帳號版與機構版功能比較

	個人版	機構版
AI 學術問答 Assistant Chats	V	V
個人化功能 (需創建帳號) Personal Dashboards	V	V
參考文獻檢查 Reference Check	V	V
Scite Chrome Extension	V	V
Scite Zotero Plugin	V	V
機構引用報告 Institutional Report	X	V
Scite API	X	V
校外連線機制 (LibKey, VPN, etc)	X	V
使用統計與其他客戶服務	X	V
最新的推理模型	X	V
管控方式	帳號	IP

溫馨提醒



注意資料安全性

保留自己的判斷

了解 AI 學習的資料來源

改寫他人文字時, 要記得引用

不要直接使用 AI 工具所產生的
新內容 (AI Plagiarism)