



提升英文學術 寫作品質

想要擺脫一成不變的論文用字嗎？
想要更多論文寫作的句型建議嗎？

來試試 Writefull 吧！

AI 工具的表現, 取決於其訓練內容 / 任務



Generative A.I.

- ChatGPT
- Gemini
- Midjourney
- Sora

Task-specific A.I.

- Grammarly
- **Writefull**

同樣的句子, 不同工具所給的建議並不相同



Writefull

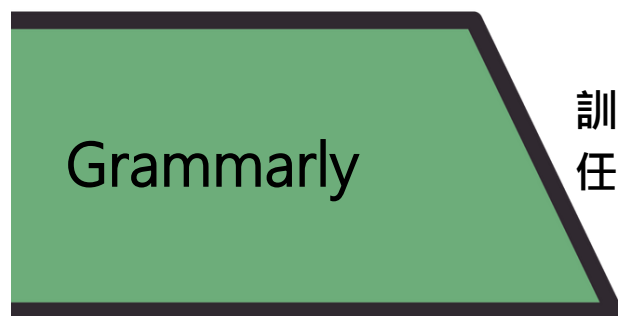
訓練資料：學術論文、研究文獻
任務：學術寫作編修

Notably, the findings revealed marked disparities in heterogeneity between forests affected by fire and those left **untouched**.

In particular, the findings revealed marked disparities in heterogeneity between forests affected by fire and those left **unaffected**.



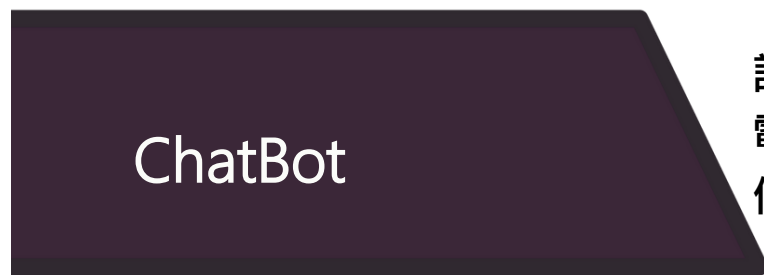
- 增加字詞變化
- 強化邏輯結構



Grammarly

訓練資料：(未揭露，推測為一般文件)
任務：一般文件或對話潤飾

Notably, the findings revealed marked disparities in heterogeneity between forests affected by fire and those left untouched.



ChatBot

訓練資料：網路上的公開文本，如電子書、部落格文章、社群媒體等
任務：泛用語言模型

“如果是我在編輯學術論文，我會保留原句不變，因為它已經表達得很清楚了。有時「不修改」才是最好的選擇。”

Writefull

專為英文學術寫作設計



AI協力學術英文編修

以學術文獻為訓練材料，修正建議皆符順學術寫作的風格與邏輯要求



各階段研究者皆適用

不論是初次撰寫論文，或資深研究學者，都能主導整個編修歷程，自行選用最適合的策略



各式小工具，節省寫作時間

- 文法糾錯，提供文句改寫建議
- 依據摘要生成論文標題
- 檢查是否有遺漏引用資訊

Writefull 各產品的使用情境

給予建議，邊寫邊改

for Word

- 在寫作同時直接提供編修建議
- 需安裝(有最低軟體需求)

for Overleaf

- 在LaTeX檔案中寫作適用
- 需擁有Overleaf帳號

完稿檢查

Revise

- 能快速檢查並修改文章
- 可直接下載修改後的文章

Cite

- 檢查並建議插入可能遺漏的
引用書目

What's for Writefull ?

Writefull for Word

Use the best academic language feedback and writing widgets in Word.

<https://www.writefull.com/writefull-for-word>

Writefull for Overleaf

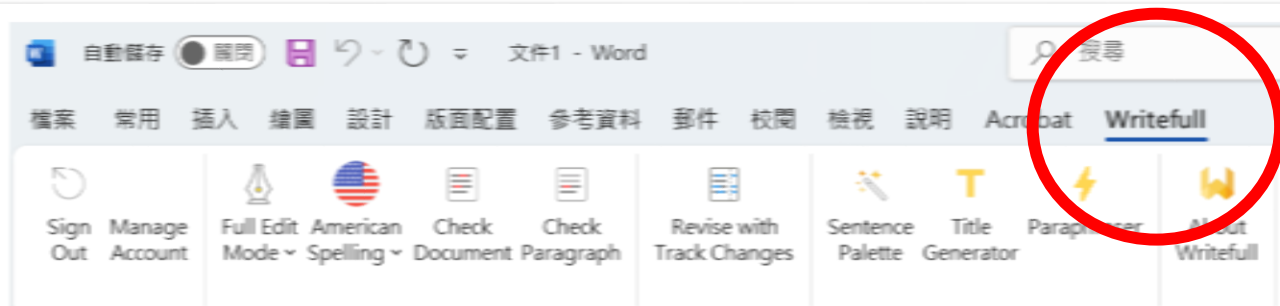
Get the best scientific language feedback and features, within Overleaf.

Writefull Revise

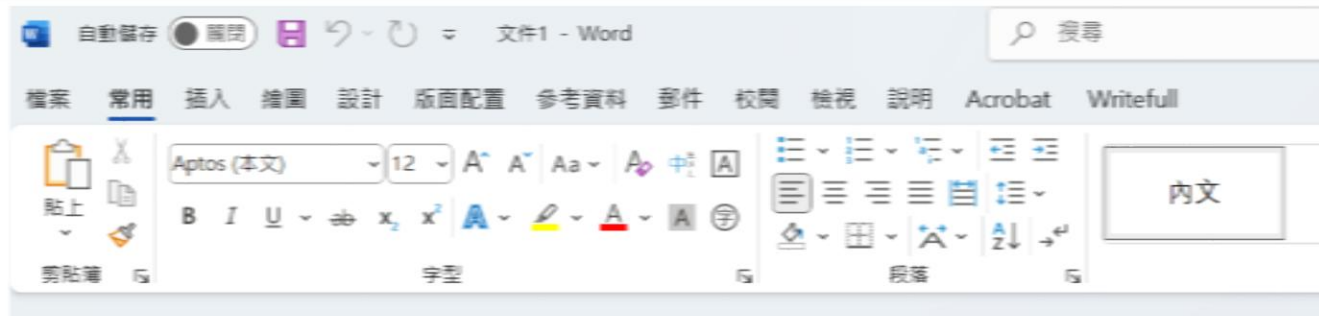
Use Writefull Revise to quickly improve your text!

Writefull Cite

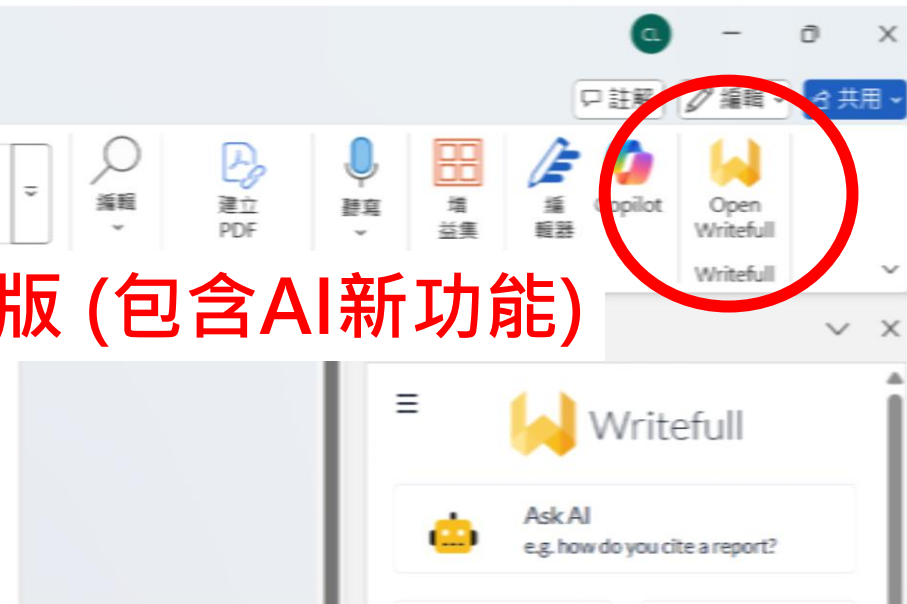
Use Writefull Cite to make sure you're not missing citations!

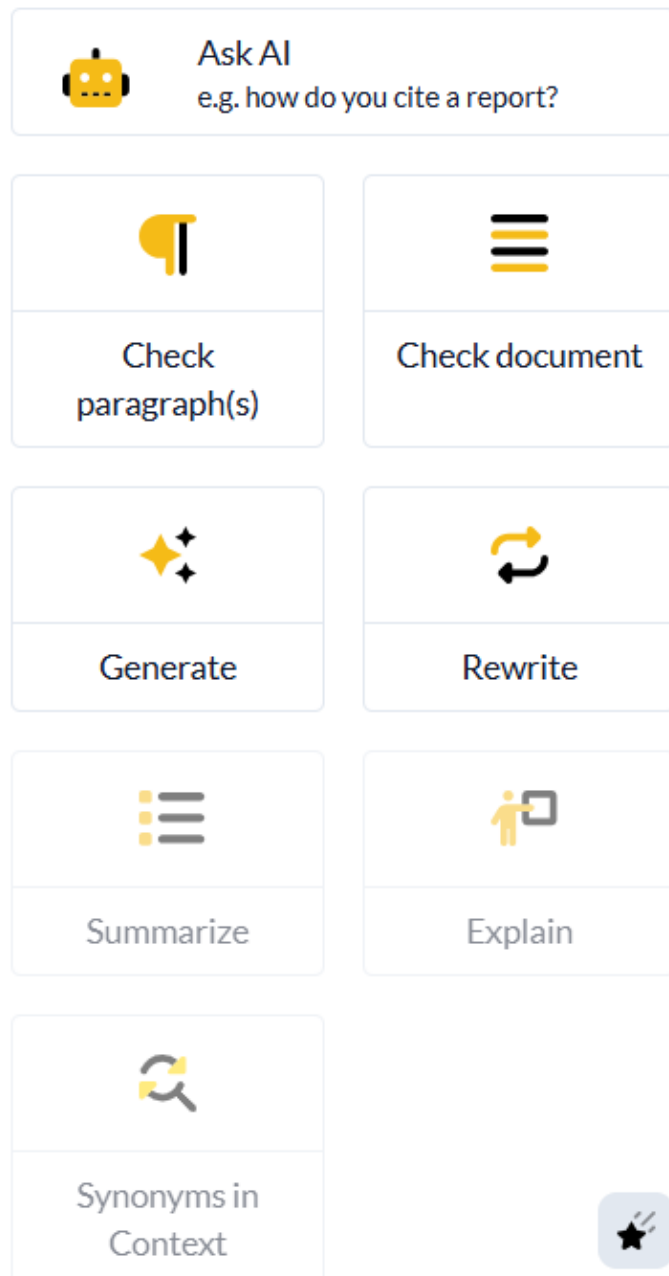


原版
適用於 Word 2016 之前



新版 (包含AI新功能)





- **Ask AI:** 以文章內容為討論主題的聊天機器人，無資安及幻覺問題，可用中文詢問
- **Check Paragraphs:** 小段落，邊寫邊修
- **Check Document:** 全篇檢查，耗時較久，適用於送件前的整體潤飾
- **Generate:**
 - **Abstract:** 依全篇內容產生，限1000-15000字
 - **Title:** 選取段落後產生，限100-2000字
- **Rewrite:** 保留原意、換句話說 (詳見下頁)
- **Summarize:** 選取至少50字，製作簡報、海報、大綱
- **Explain:** 選取段落，需理解他人文意，或製作較詳細的說明文
- **Synonyms in Context:** 選取至少1-5字，替換單詞、片語或詞組的建議

Rewrite: 保留原意、換句話說

Paraphrase：依照英文學術寫作模式進行一般的改寫。
(可選取至少一個字，至多 25 句。)

Make concise：將句子改短。
(請選取至少 10 個字，至多 25 句。)

Make punchy：使用較強烈的文字，將句子改得更為有力、更具說服力。(請選取至少 10 個字，至多 25 句。)

Make scientific：將口語化的句子改為符合學術或研究文獻的風格。
(請選取至少 10 個字，至多 25 句。)

Split：可將長句切分為多個較短的句子，以便閱讀與理解。
(請選取一個單句。)

Join：可將數個句子合併為一句。



Paraphrase



Make concise



Make punchy



Make scientific

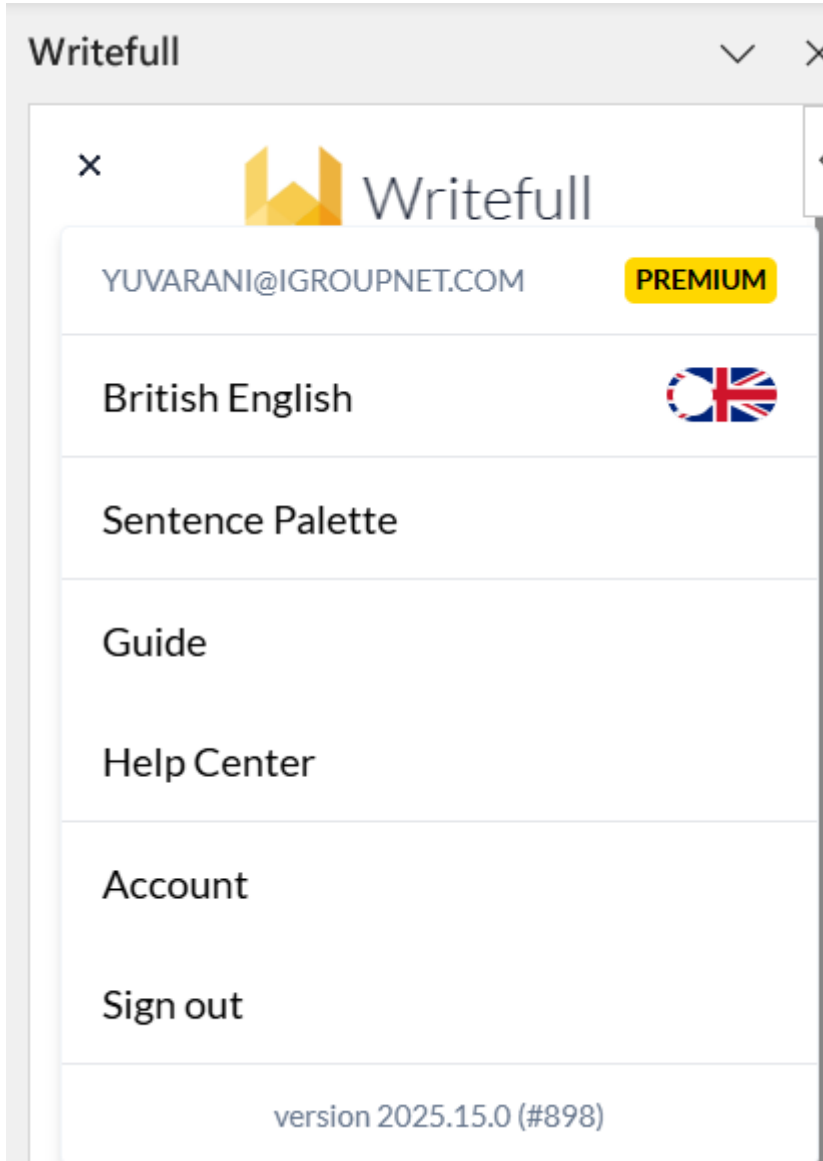


Split



Join





上方選單設定：

- 英文風格：可切換美式 / 英式
- Sentence Palette: 各種用字建議

What's for Writefull ?

Writefull for Word

Use the best academic language feedback and writing widgets in Word.

Writefull for Overleaf

Get the best scientific language feedback and features, within Overleaf.

<https://www.writefull.com/writefull-for-overleaf>

Writefull Revise

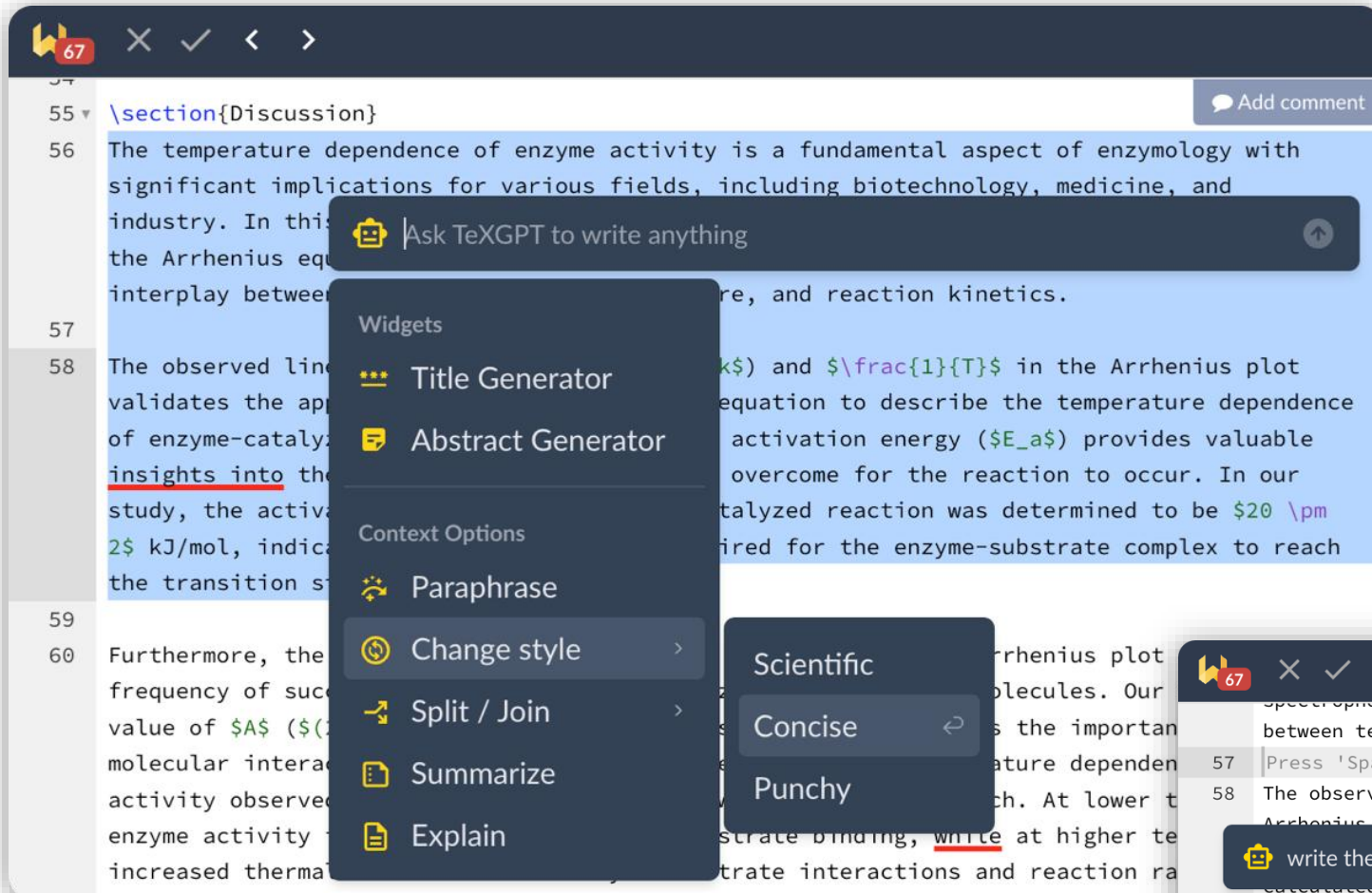
Use Writefull Revise to quickly improve your text!

Writefull Cite

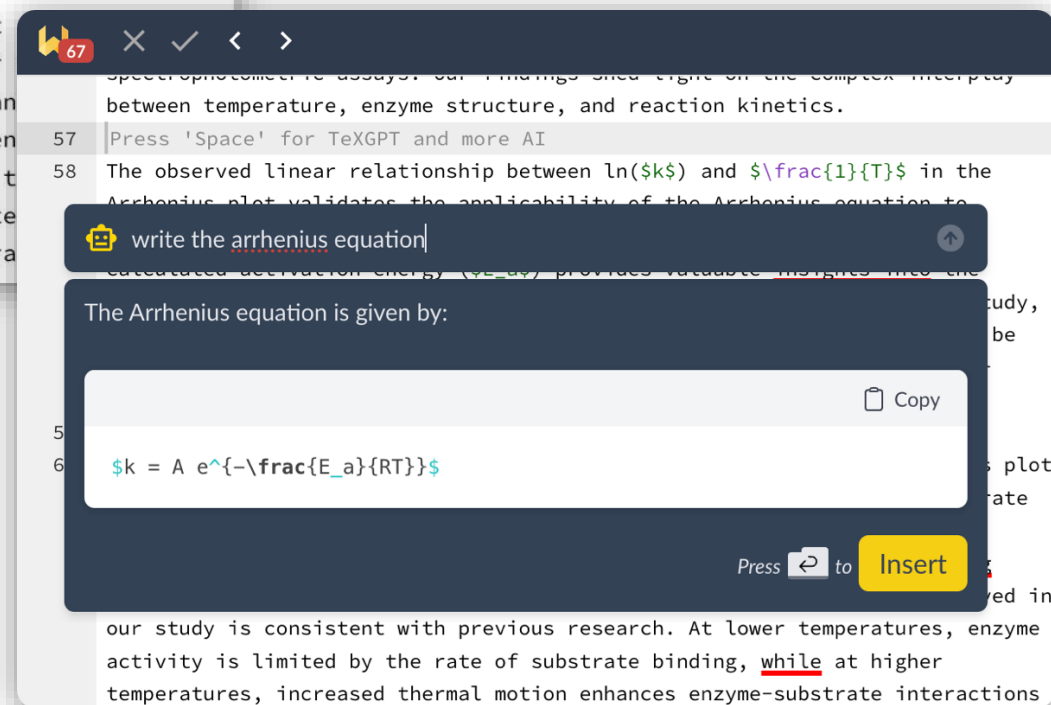
Use Writefull Cite to make sure you're not missing citations!

TeXGPT

同「Ask AI」



方程式生成
透過指令或上傳圖片
直接生成方程式或表格的
LaTeX code



What's for Writefull ?

Writefull for Word

Use the best academic language feedback and writing widgets in Word.

Writefull for Overleaf

Get the best scientific language feedback and features, within Overleaf.

Writefull Revise

Use Writefull Revise to quickly improve your text!

全篇檢查，
直接下載修正好的檔案
適用於作業批改，或完稿前最後查驗

Writefull Cite

Use Writefull Cite to make sure you're not missing citations!

35

SUGGESTIONS

1 Fire Effects on Forest Composition: A Case Study of California

2 Abstract

3 This study considers the effect of dryness and fire on the composition of forests. Forest sampling was carried out in central California, which has seen a **great quantity** **large number** of wildfires **over the last** **in recent** years. The history and area of forest fires has been carefully chosen and its composition has been carefully studied. The results **showed,** **showed** that forest heterogeneity differed greatly between **forest** **forests** that were and were not impacted by fires. **It** **Fire intensity** was found **that fire intensity** **to** significantly **affected** **affect** variables such as tree density, species **diversity** **diversity,** and the spread of unburned patches. While fire intensity has some sort of huge impact on the severity of each of these, even relatively small fires showed dramatic effects on heterogeneity. Future research should aim to uncover the predictive character of different composition characteristics. Studies have found that forest fires have a synclinal character, meaning that if a forest has a history of fires, it is more

CONTINUE TO DOWNLOAD

What's for Writefull ?

Writefull for Word

Use the best academic language feedback and writing widgets in Word.

Writefull for Overleaf

Get the best scientific language feedback and features, within Overleaf.

Writefull Revise

Use Writefull Revise to quickly improve your text!

Writefull Cite

Use Writefull Cite to make sure you're not missing citations!

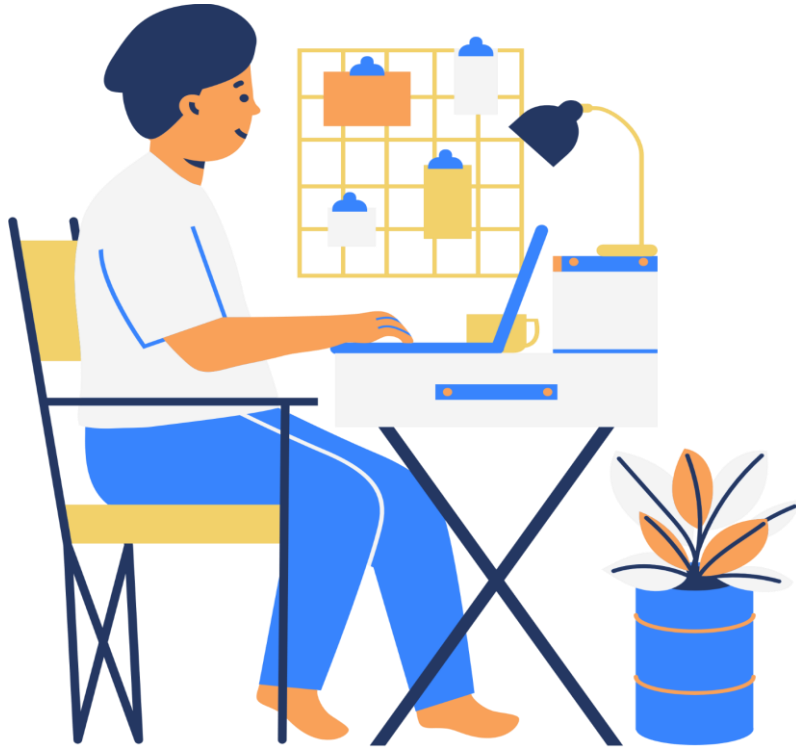
找到可能有引用疏漏的段落

- 可調整辨識強度
- 會標明信心指數

3 This study considers the effect of dryness and fire on the composition of forests. Forest sampling was carried out in central California, which has seen a great quantity of wildfires over the last years. The history and area of forest fires has been carefully chosen and its composition has been carefully studied. The results showed, that forest heterogeneity differed greatly between forest that were and were not impacted by fires. It was found that fire intensity significantly affected variables such as tree density, species diversity and the spread of unburned patches. While fire intensity has some sort of huge impact on the severity of each of these, even relatively small fires showed dramatic effects on heterogeneity. Future research should aim to uncover the predictive character of different composition characteristics. **Studies have found that forest fires have a synclinal character, meaning that if a forest has a history of fires, it is more likely to become flammable again.** MISSING CITATION? (0.951) The characteristics of the forest composition can be used to assess the susceptibility to history and also the fire susceptibility of forests. California is a classical example area to continue studying.

5 Forest fires are a very serious concern worldwide, leading to thousands of people being killed. MISSING CITATION? (0.702) Many governments have brushed off the severity of forest fires over the years, but adequate precautions can be used for the prevention of them. MISSING CITATION? (0.655) Successive Five Year Plans have provided funds for forest fighting. During the British period, fire was prevented in the summer through removal of forest litter all along the forest boundary. This was called "Forest Fire Line". This lines used for the prevention of fire breaking into the forest from one compartment to another. The collected litter was burnt at isolation. Generally, the fire spread only if there is supply of fuel that is continuous

溫馨提醒



注意資料安全性

保留自己的判斷

了解 AI 學習的資料來源

改寫他人文字時, 要記得引用

不要直接使用 AI 工具所產生的
新內容 (AI Plagiarism)